

SILVA 2



North Waterfront

An exciting new destination for Belarus

The North Waterfront development is a bold new vision for a waterfront community in the heart of the capital that looks to the future whilst drawing inspiration from the neighborhood's rich history.

We have diverted the status quo towards prioritizing residents' well-being and experiences, focusing on the importance of quality amenities and resident's lifestyles by bringing the most incredible designers and architects to deliver world-class communities.



Any public images and visualizations published on the official website and in informational materials (including brochures, renders, prospectuses, booklets, layouts, 3D models, diagrams, and other graphic materials) do not constitute a public offer, advertising representation, or warranty of full compliance of the future construction project with the depicted materials, do not form part of the project documentation, nor constitute information contained therein. Such materials are of a conditional, reference, and illustrative nature only and are intended solely to convey a possible concept and the anticipated atmosphere of the future residential development. The project documentation shall have unconditional priority for all participants in the construction process.

The Developer reserves the right, at its sole discretion and without prior approval or consent of the client, to amend project solutions, including but not limited to the visual characteristics of the building, landscaping of adjacent territories, small architectural forms, as well as engineering and transport infrastructure and the street and road network, construction and finishing materials, and their actual physical implementation.

Location

The path to a blissful life is paved comfortably with North Waterfront's highly accessible location.

35

mins
From the
Airport

25

mins
From the
City Center

1

mins
From the
Ring Road

15

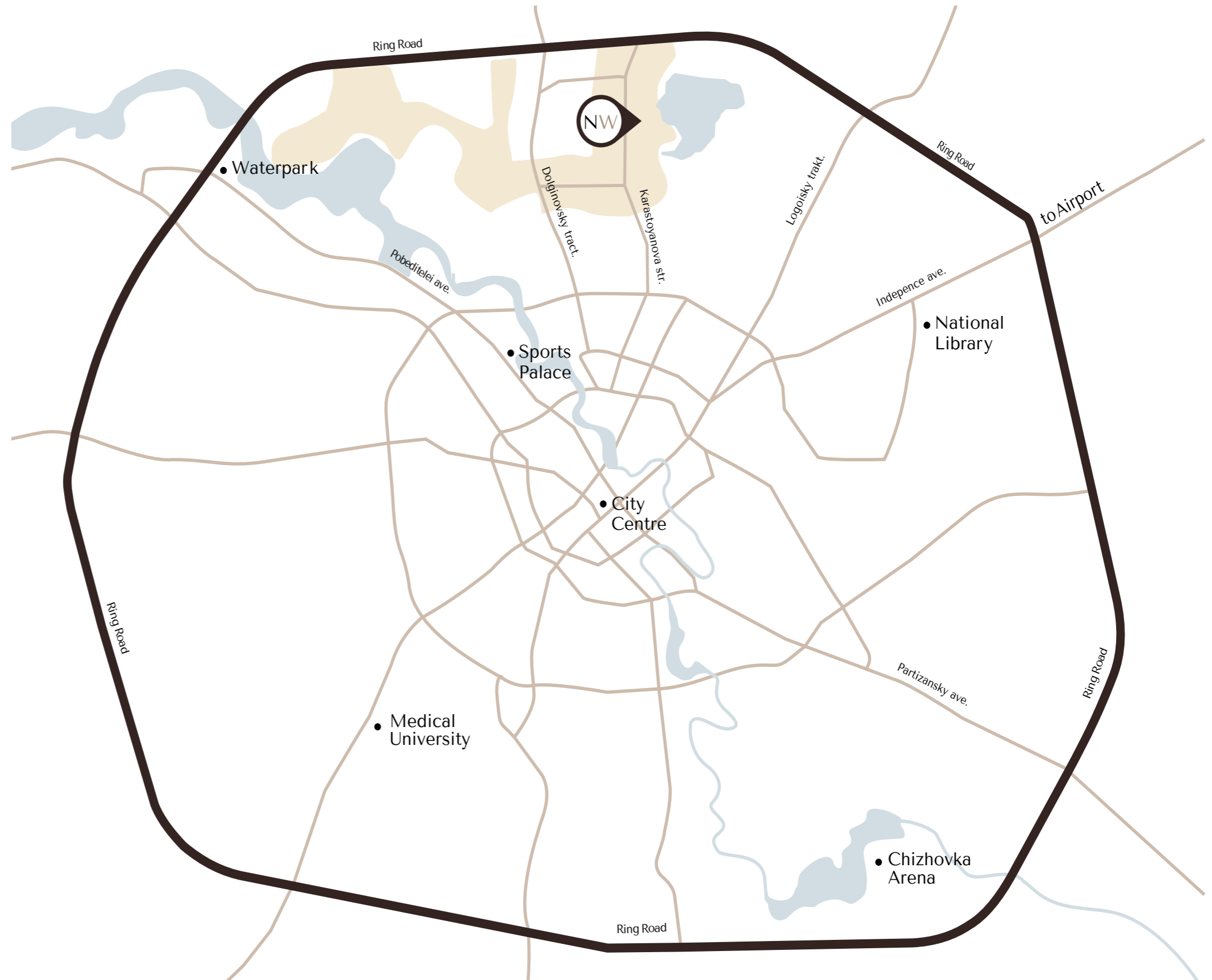
mins
From the
National Library

30

mins
From the
Railway
Station

10













mins
From the
Sports Palace



Infrastructure

North Waterfront, designed with the innovative 10-minute city concept, redefines comfort at an unprecedented level. This project caters to the modern urban lifestyle, ensuring that everything a resident's needs – shopping, dining, entertainment, and more – is within a quick 10-minute reach.



-  Exhibition Center
-  Parks
-  Ice Rink
-  Schools
-  Kid's Play Areas
-  Dog Parks
-  Cycling Track
-  Kindergartens
-  IT University
-  Supermarkets
-  Fishing Pier
-  Medical Centers

Lakeside Park

Residents of North Waterfront will be able to enjoy the modern and healthy environment created by the Lakeside Park.

The park offers a wonderful atmosphere perfect for relaxing and socializing amidst a captivating blend of natural beauty and immersive attractions.



Sports Areas

Picnic Areas

Kid's Play Area

Green Parks

Cycling Track

Barbecue Areas

Art Sculptures

Jogging Trail

Amphitheater

Urban Beach

Cafes

Fishing Pier

Kindergarten

To make your North Waterfront living experience exceptional, an array of facilities are dedicated solely to your loved ones. A brand-new kindergarten offers a caring, creative and safe space where little ones can learn, play and grow together.



School

At the heart of the neighborhood, a new school will open its doors — a place where knowledge, care and comfort converge.

Spacious classrooms, science labs, a library, gyms and two swimming pools form a well-rounded educational environment.

Designed to the highest modern standards, this school will become an integral part of the neighborhood — a foundation for confident futures.



Residential Club

North Waterfront provides a unique experience that combines the benefits of neighborhood living with exclusive amenities and services.

The Residential Club, conveniently situated within a walking distance, offers elegantly styled spaces exclusive to residents, enriching contemporary living with comfort and effortless access to premium amenities.

The refined indoor leisure



Padel Park

Padel Park & Green Trails at North Waterfront introduce an active yet refined outdoor destination where sport, leisure, and nature come together.

Purpose-designed padel courts are complemented by green walking trails, tranquil rest areas, and a contemporary children's playground, creating a balanced environment for all generations.



SILVA 2

Silva 2 is an architectural expression of balance – where form, proportion, and lifestyle align with quiet precision.

The building continues the North Waterfront language of contemporary elegance, defined by clean geometry, softened volumes, and carefully composed facades.





Designed for
a calm, steady way of living

SILVA 2

Silva 2 is a deeper expression of the North Waterfront lifestyle - architectural clarity paired with effortless everyday living.

Between curated green landscapes and the composed vitality of the Padel Park, the Neighborhood is shaped around a lifestyle where nature, movement, and sophistication are seamlessly aligned.

The architecture of the homes and infrastructure responds gently to natural surroundings. Silva 2 stands as a refined architectural presence both modern and timeless.





Lakeside Park

Neighborhood square

Silva 1

Alistan 1

Tally 2

Kindergarten

Car Park

Silva 2

Tally 4

Padel Park

Car Park

Silva 3

Residential Club



Interiors

Interiors at Silva 2 are designed to support life — unforced, flexible, and quietly sophisticated.

Light becomes an essential design element, moving freely through the space and highlighting textures, materials, and proportions.

- Lobbies with panoramic glazing
- Elegantly designed hallways

- Dedicated storage for strollers
- Pet paw-washing facilities



Space designed for the way you live

At Silva 2, apartments are conceived as adaptable environments rather than fixed layouts. Each residence offers the freedom to shape space around your habits, routines, and personal sense of aesthetics.

From thoughtfully designed one-bedroom homes to expansive family apartments, every layout prioritizes light, flow, and functionality.



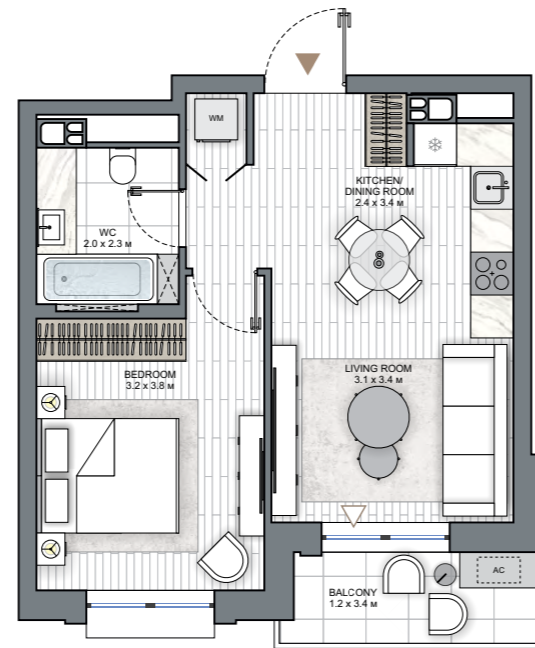
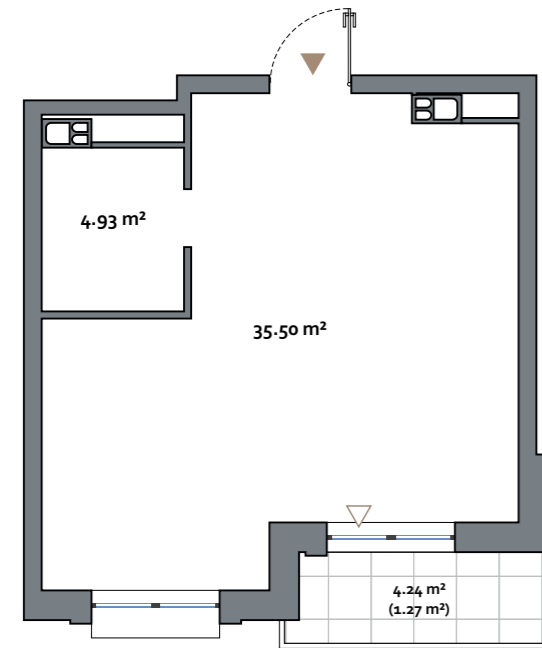
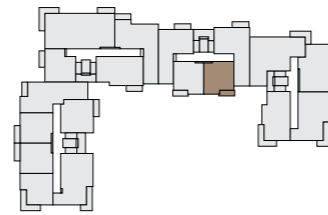
1
BEDROOM

NVW NORTH WATERFRONT
SILVA 2

1 BEDROOM
TYPE A

APARTMENT AREA 40.43 - 41.01 m²
BALCONY AREA 4.24 (1.27 m²)
NET AREA 41.70 - 42.28 m²

KEY PLAN 2-8 FLOORS



Disclaimer

1. All room dimensions are in metric and measured to structural elements and exclude wall finishes and construction tolerances.
2. All dimensions have been provided by our consultant architects.
3. All materials, dimensions, features and amenities are approximate at the time of printing.
4. Actual area may vary from stated area and unit direction may vary from unit to unit. Drawings not to scale. The developer reserves the right to make revisions to the floor plans and any features, materials, dimensions, drawings and amenities mentioned in this brochure without notice.

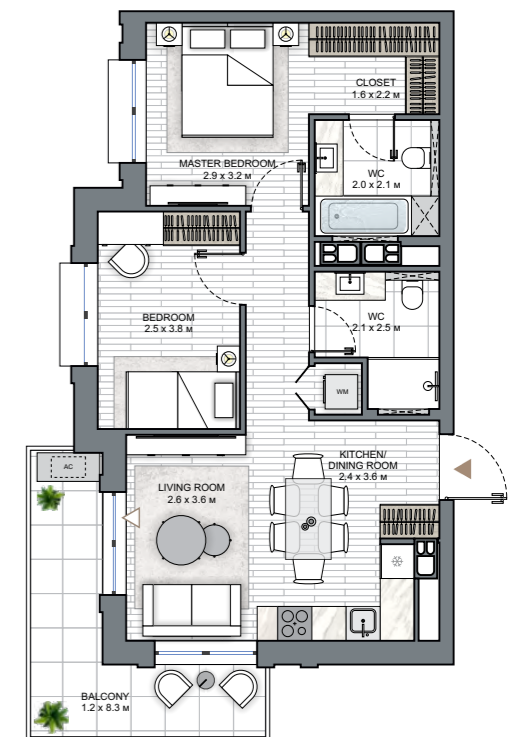
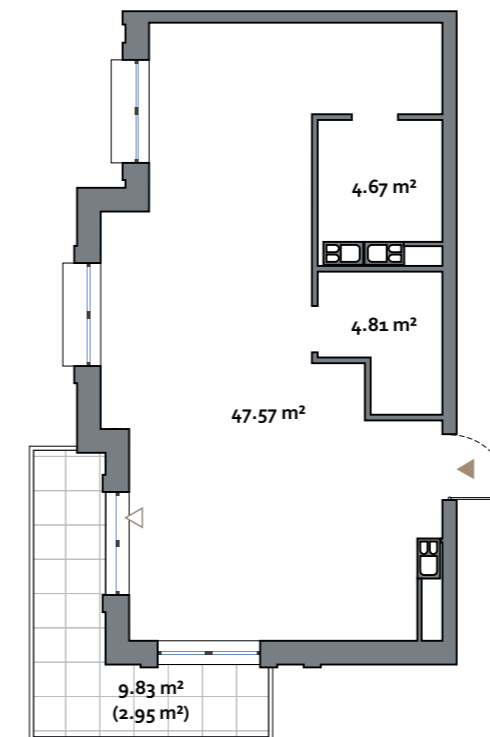
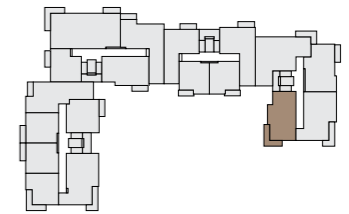
2
BEDROOM

NVW NORTH WATERFRONT
SILVA 2

2 BEDROOM
TYPE A

APARTMENT AREA 57.05 - 57.75 m²
BALCONY AREA 9.83 (2.95 m²)
NET AREA 60.00 - 60.70 m²

KEY PLAN 2-6 FLOORS



Disclaimer

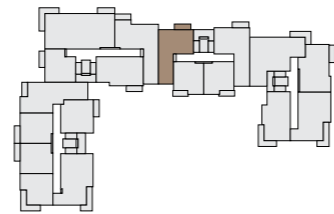
1. All room dimensions are in metric and measured to structural elements and exclude wall finishes and construction tolerances.
2. All dimensions have been provided by our consultant architects.
3. All materials, dimensions, features and amenities are approximate at the time of printing.
4. Actual area may vary from stated area and unit direction may vary from unit to unit. Drawings not to scale. The developer reserves the right to make revisions to the floor plans and any features, materials, dimensions, drawings and amenities mentioned in this brochure without notice.

NVW NORTH WATERFRONT
2 | **SILVA 2**
 BEDROOM

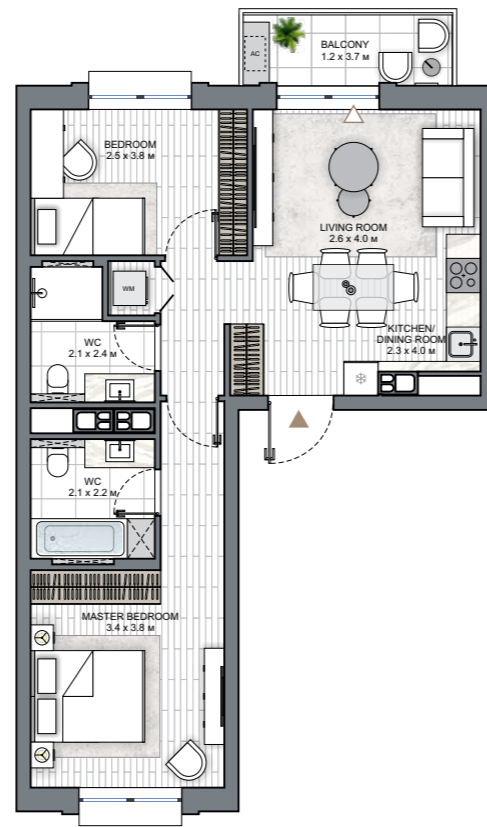
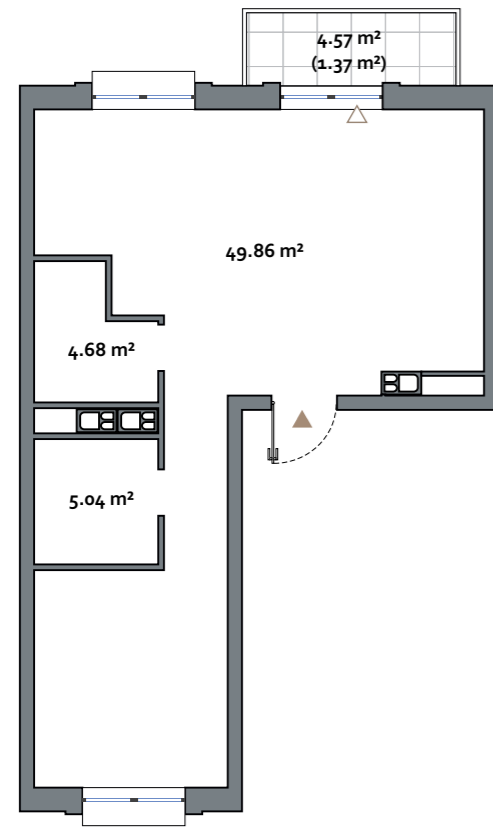
2 BEDROOM
 TYPE B

APARTMENT AREA59.58 - 60.22 m²
 BALCONY AREA4.57 (1.37 m²)
 NET AREA60.22 - 60.95 m²

KEY PLAN 2-8 FLOORS



LAKESIDE PARK



Disclaimer

1. All room dimensions are in metric and measured to structural elements and exclude wall finishes and construction tolerances.
2. All dimensions have been provided by our consultant architects.
3. All materials, dimensions, features and amenities are approximate at the time of printing.
4. Actual area may vary from stated area and unit direction may vary from unit to unit. The developer reserves the right to make revisions to the floor plans and any features, materials, dimensions, drawings and amenities mentioned in this brochure without notice.

NVW NORTH WATERFRONT
2 | **SILVA 2**
 BEDROOM

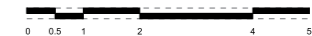
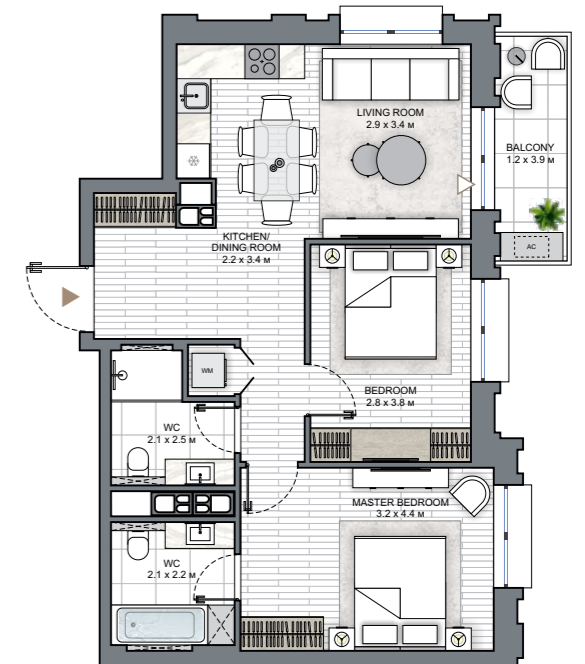
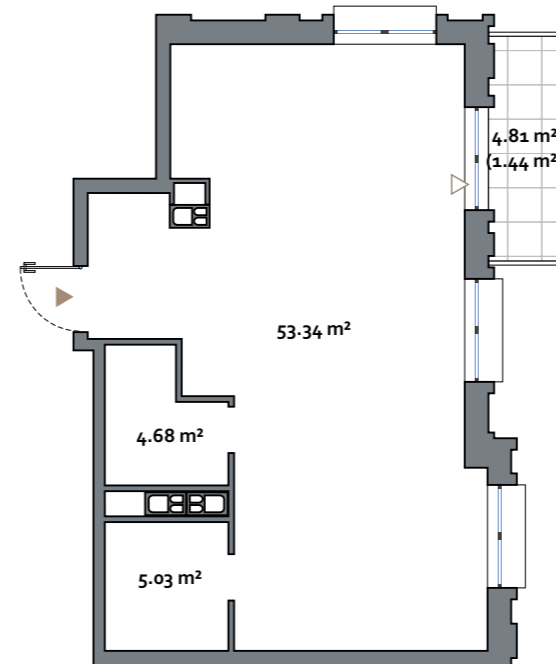
2 BEDROOM
 TYPE D

APARTMENT AREA63.05 - 63.63 m²
 BALCONY AREA4.81 (1.44 m²)
 NET AREA63.63 - 64.49 m²

KEY PLAN 2-6 FLOORS



LAKESIDE PARK



Disclaimer

1. All room dimensions are in metric and measured to structural elements and exclude wall finishes and construction tolerances.
2. All dimensions have been provided by our consultant architects.
3. All materials, dimensions, features and amenities are approximate at the time of printing.
4. Actual area may vary from stated area and unit direction may vary from unit to unit. The developer reserves the right to make revisions to the floor plans and any features, materials, dimensions, drawings and amenities mentioned in this brochure without notice.

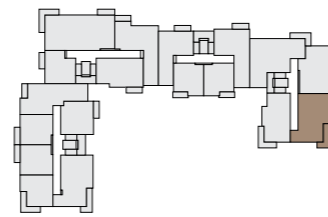
2
BEDROOM

NV NORTH WATERFRONT SILVA 2

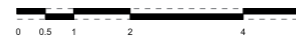
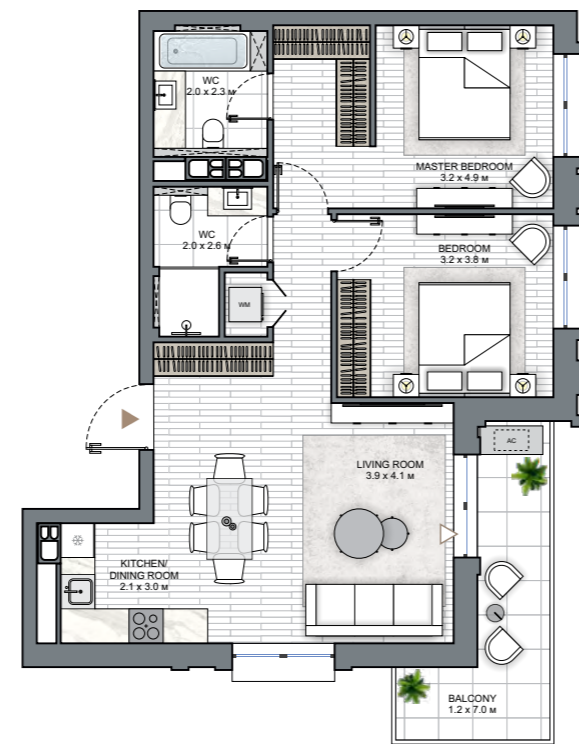
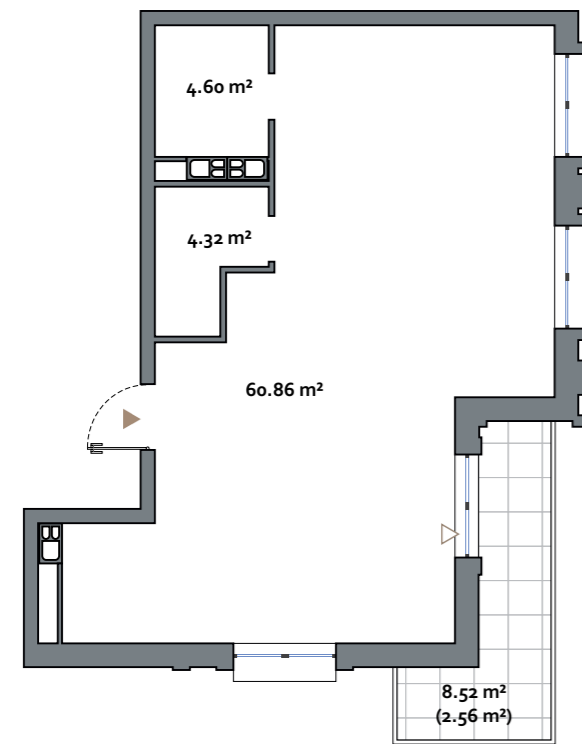
2 BEDROOM TYPE F

APARTMENT AREA69.78 - 70.40 m²
BALCONY AREA8.52 (2.56 m²)
NET AREA70.40 - 72.34 m²

KEY PLAN 2-6 FLOORS



LAKESIDE
PARK



Disclaimer

1. All room dimensions are in metric and measured to structural elements and exclude wall finishes and construction tolerances.
2. All dimensions have been provided by our consultant architects.
3. All materials, dimensions, features and amenities are approximate at the time of printing.
4. Actual area may vary from stated area and unit direction may vary from unit to unit. Drawings not to scale. The developer reserves the right to make revisions to the floor plans and any features, materials, dimensions, drawings and amenities mentioned in this brochure without notice.

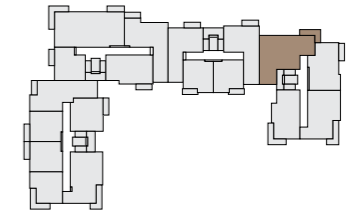
3
BEDROOM

NV NORTH WATERFRONT SILVA 2

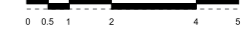
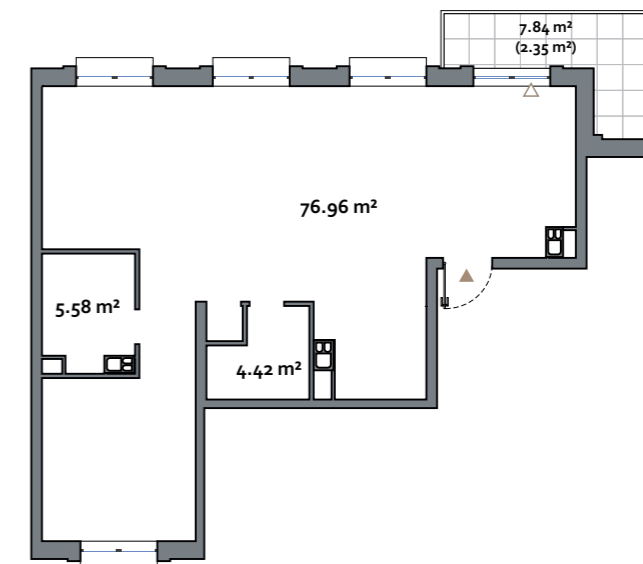
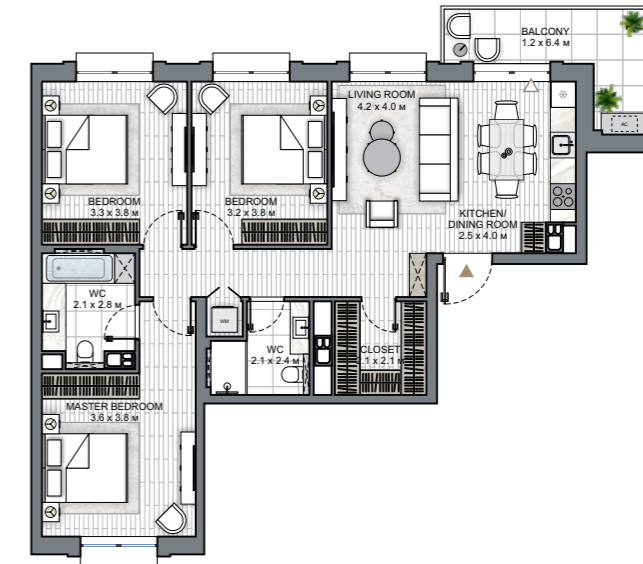
3 BEDROOM TYPE B

APARTMENT AREA86.96 - 87.84 m²
BALCONY AREA7.84 (2.35 m²)
NET AREA87.84 - 89.31 m²

KEY PLAN 2-6 FLOORS



LAKESIDE
PARK



Disclaimer

1. All room dimensions are in metric and measured to structural elements and exclude wall finishes and construction tolerances.
2. All dimensions have been provided by our consultant architects.
3. All materials, dimensions, features and amenities are approximate at the time of printing.
4. Actual area may vary from stated area and unit direction may vary from unit to unit. Drawings not to scale. The developer reserves the right to make revisions to the floor plans and any features, materials, dimensions, drawings and amenities mentioned in this brochure without notice.

SILVA 2

Any public images and visualizations published on the official website and in informational materials (including brochures, renders, prospectuses, booklets, layouts, 3D models, diagrams, and other graphic materials) do not constitute a public offer, advertising representation, or warranty of full compliance of the future construction project with the depicted materials, do not form part of the project documentation, nor constitute information contained therein. Such materials are of a conditional, reference, and illustrative nature only and are intended solely to convey a possible concept and the anticipated atmosphere of the future residential development. The project documentation shall have unconditional priority for all participants in the construction process.

The Developer reserves the right, at its sole discretion and without prior approval or consent of the client, to amend project solutions, including but not limited to the visual characteristics of the building, landscaping of adjacent territories, small architectural forms, as well as engineering and transport infrastructure and the street and road network, construction and finishing materials, and their actual physical implementation.

NORTHWATERFRONT.BY



International number: + 375 17 311-68-88
Toll-free number: 8-801-100-3888

North Waterfront Sales Center,
Sverdlova str. 11, Minsk
Tsvirko str. 84, Minsk