

NW NORTH  
WATERFRONT

# Naomi 4



# North Waterfront

## An exciting new destination for Belarus

The North Waterfront development is a bold new vision for a waterfront community in the heart of the capital that looks to the future whilst drawing inspiration from the neighborhood's rich history.

We have diverted the status quo towards prioritizing residents' well-being and experiences, focusing on the importance of quality amenities and resident's lifestyles by bringing the most incredible designers and architects to deliver world-class communities.



Any public images and visualizations published on the official website and in informational materials (including brochures, renders, prospectuses, booklets, layouts, 3D models, diagrams, and other graphic materials) do not constitute a public offer, advertising representation, or warranty of full compliance of the future construction project with the depicted materials, do not form part of the project documentation, nor constitute information contained therein. Such materials are of a conditional, reference, and illustrative nature only and are intended solely to convey a possible concept and the anticipated atmosphere of the future residential development. The project documentation shall have unconditional priority for all participants in the construction process.

The Developer reserves the right, at its sole discretion and without prior approval or consent of the client, to amend project solutions, including but not limited to the visual characteristics of the building, landscaping of adjacent territories, small architectural forms, as well as engineering and transport infrastructure and the street and road network, construction and finishing materials, and their actual physical implementation.

# Location

The path to a blissful life is paved comfortably with North Waterfront's highly accessible location.

35

mins  
From the  
Airport

25

mins  
From the  
City Center

1

min  
From the  
Ring Road

15

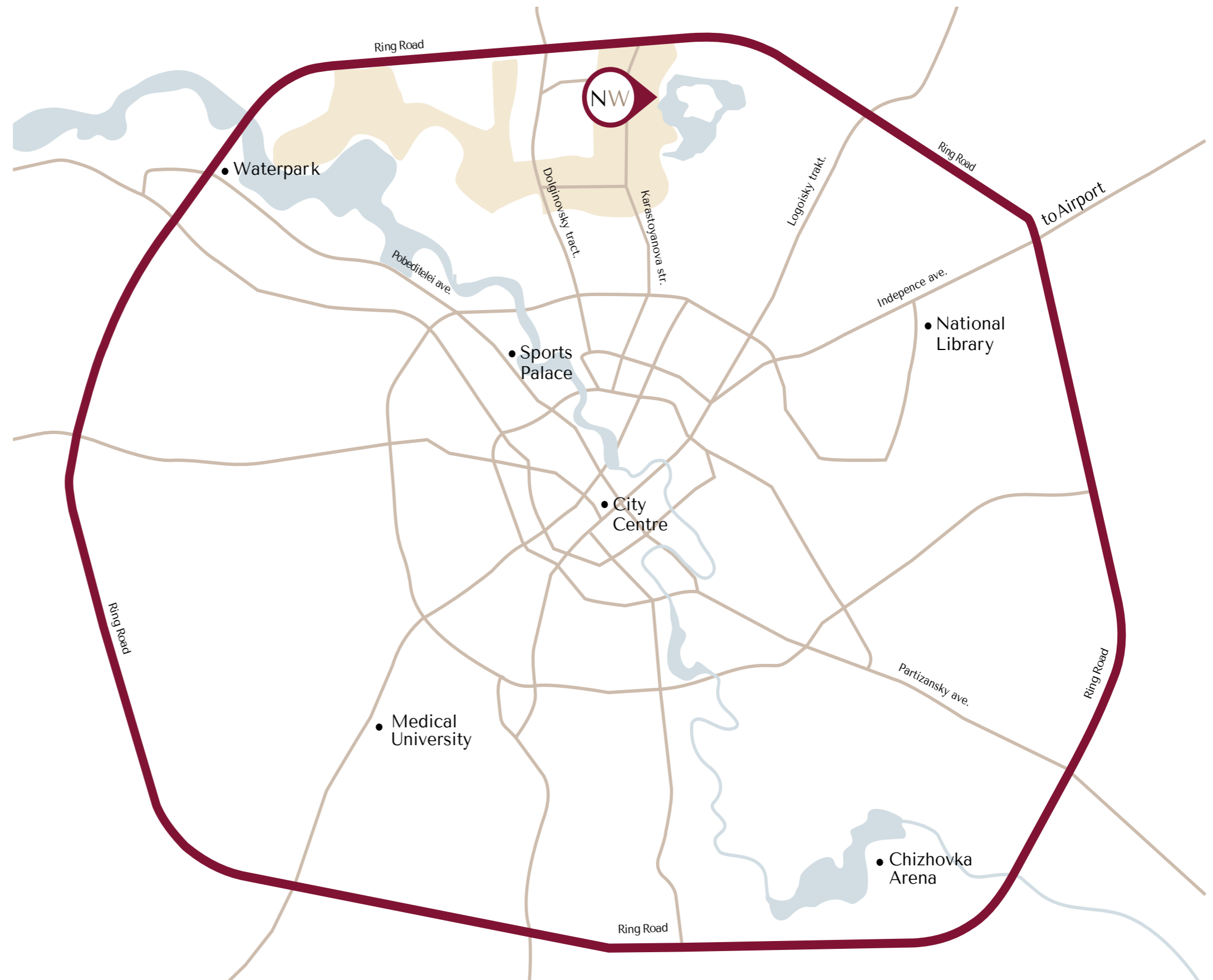
mins  
From the  
National Library

30

mins  
From the  
Railway  
Station

10













mins  
From the  
Sports Palace



# Infrastructure

North Waterfront, designed with the innovative 10-minute city concept, redefines comfort at an unprecedented level. This project caters to the modern urban lifestyle, ensuring that everything a resident's needs – shopping, dining, entertainment, and more – is within a quick 10-minute reach.



-  Exhibition Center
-  Parks
-  Ice Rink
-  Schools
-  Kid's Play Areas
-  Dog Parks
-  Cycling Track
-  Kindergartens
-  IT University
-  Supermarkets
-  Fishing Pier
-  Medical Centers

# Lakeside Park

Residents of North Waterfront will be able to enjoy the modern and healthy environment created by the Lakeside Park.

The park offers a wonderful atmosphere perfect for relaxing and socializing amidst a captivating blend of natural beauty and immersive attractions.



Sports  
Areas

Picnic  
Areas

Kid's  
Play Area

Green  
Parks

Cycling  
Track

Barbecue  
Areas

Art  
Sculptures

Jogging  
Trail

Amphitheater

Urban  
Beach

Cafes

Fishing  
Pier

# Kindergarten

To make your North Waterfront living experience exceptional, an array of facilities are dedicated solely to your loved ones. A brand-new kindergarten offers a caring, creative and safe space where little ones can learn, play and grow together.



# School

At the heart of the neighborhood, a new school will open its doors — a place where knowledge, care and comfort converge.

Spacious classrooms, science labs, a library, gyms and two swimming pools form a well-rounded educational environment.

Designed to the highest modern standards, this school will become an integral part of the neighborhood — a foundation for confident futures.



# Residential Club

North Waterfront provides a unique experience that combines the benefits of neighborhood living with exclusive amenities and services.

The Residential Club, conveniently situated within a walking distance, offers elegantly styled spaces exclusive to residents, enriching contemporary living with comfort and effortless access to premium amenities.

The refined indoor leisure



# Pocket Park

Pocket Park & Green Trails at North Waterfront introduce an active yet refined outdoor destination where sport, leisure, and nature come together.

Purpose-designed streeball courts and workout area are complemented by green walking trails, tranquil rest areas, and a contemporary children's playground, creating a balanced environment for all generations.



# Naomi 4

Naomi 4 offers a lifestyle shaped by exceptional comfort, thoughtful design, and everyday ease.

Set within a peaceful, green environment, the community invites residents to embrace a slower, more balanced rhythm of life. Scenic walking paths and beautifully landscaped open spaces create the perfect backdrop for relaxation, while children can play freely outdoors and adults can enjoy moments of tranquility away from the pace of the city.





# Naomi 4

New dimensions of everyday living are revealed at Naomi 4.

The architecture seamlessly blends sophistication with functionality, creating spaces that enhance both comfort and lifestyle. Private balconies provide a peaceful retreat overlooking beautifully landscaped surroundings, while ground-floor offer exceptional opportunities for personalization - whether creating an intimate outdoor sanctuary or a welcoming setting for entertaining family and friends.

Architecture That Inspires





*Spaces Shaped by Purpose*



Lakeside Park

Neighborhood square

School

Kindergarten

Forest Park

Padel Park

Residential Club

Exhibition Center

Pocket Park

Lyna 1

Car Park

Aston 3

Lyna 2

Naomi 4

Lyna 4

Lyna 3

Aston 1

Car Park

Aston 2



# Interiors

A sense of refined tranquility begins the moment you step inside Naomi 4.

The lobby and common areas are designed as an extension of the living experience, where soft ambient lighting, elegant finishes, and thoughtfully selected furnishings create a welcoming atmosphere of understated luxury. Every detail has been carefully curated to inspire comfort and calm, transforming everyday arrivals and departures into moments of effortless sophistication.

- Designer lobbies with panoramic glazing & elegant styling
- Elegantly designed hallways

- Dedicated storage for strollers
- Pet paw-washing facilities



## Designed Around Your Vision

Every floor plan at Naomi 4 has been thoughtfully conceived to accommodate a variety of lifestyles, preferences, and daily routines. Whether embracing the carefully envisioned living experience or tailoring the space to reflect your own aspirations, each residence offers the flexibility to create a home that feels distinctly personal.

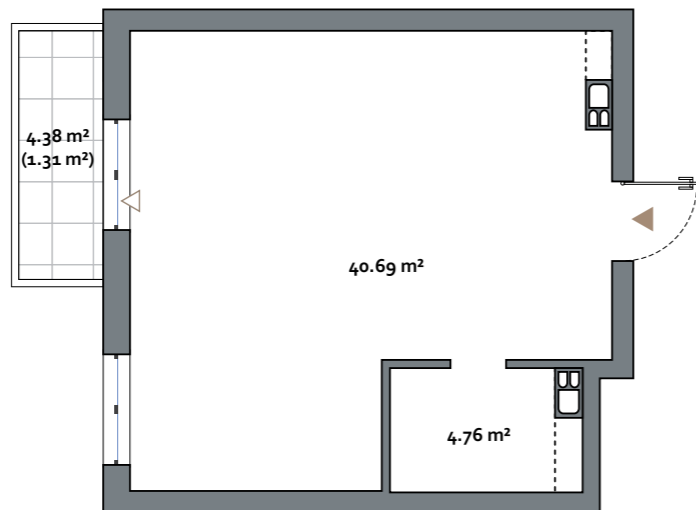
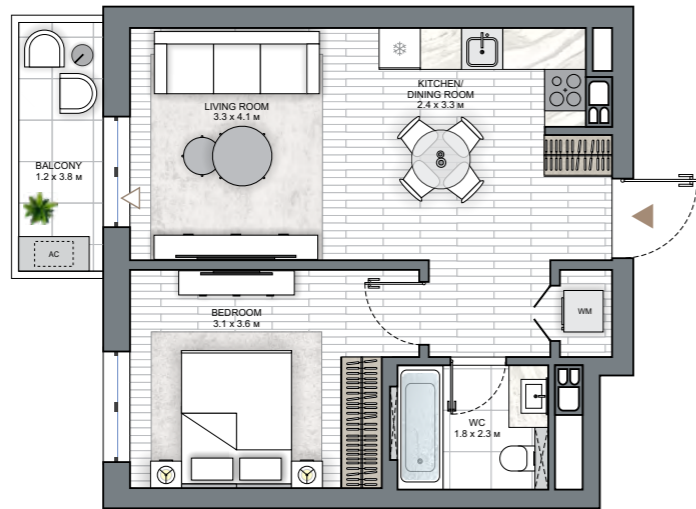
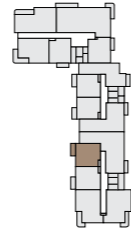


**1** | **Naomi 4**  
BEDROOM

**1 BEDROOM**  
TYPE A

APARTMENT AREA ..... 42.33 - 45.45 m<sup>2</sup>  
BALCONY AREA ..... 4.25 (1.28 m<sup>2</sup>) - 10.39 (3.12 m<sup>2</sup>)  
NET AREA ..... 42.33 - 49.15 m<sup>2</sup>

KEY PLAN 1-7 FLOORS



Disclaimer

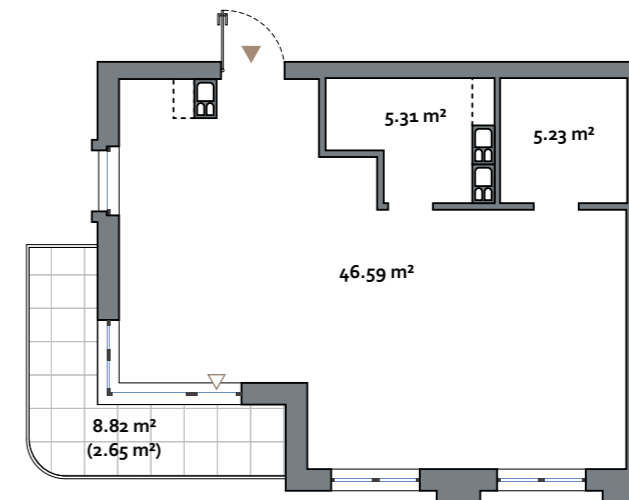
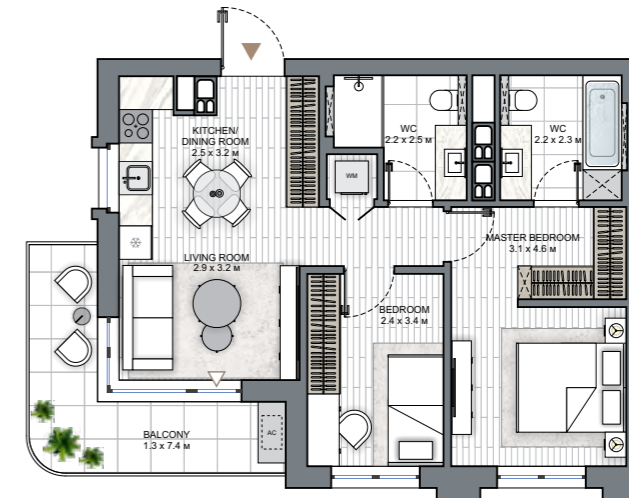
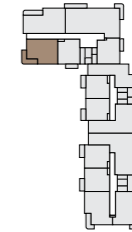
1. All room dimensions are in metric and measured to structural elements and exclude wall finishes and construction tolerances.
2. All dimensions have been provided by our consultant architects.
3. All materials, dimensions, features and amenities are approximate at the time of printing.
4. Actual area may vary from stated area and unit direction may vary from unit to unit. Drawings not to scale. The developer reserves the right to make revisions to the floor plans and any features, materials, dimensions, drawings and amenities mentioned in this brochure without notice.
5. The dashed line indicates the possible location for installing the utility lines (not performed during construction).

**2** | **Naomi 4**  
BEDROOM

**2 BEDROOM(S)**  
TYPE MB

APARTMENT AREA ..... 57.13 - 58.00 m<sup>2</sup>  
BALCONY AREA ..... 8.77 (2.63 m<sup>2</sup>) - 11.43 (3.43 m<sup>2</sup>)  
NET AREA ..... 59.76 - 61.43 m<sup>2</sup>

KEY PLAN 1-9 FLOORS



Disclaimer

1. All room dimensions are in metric and measured to structural elements and exclude wall finishes and construction tolerances.
2. All dimensions have been provided by our consultant architects.
3. All materials, dimensions, features and amenities are approximate at the time of printing.
4. Actual area may vary from stated area and unit direction may vary from unit to unit. Drawings not to scale. The developer reserves the right to make revisions to the floor plans and any features, materials, dimensions, drawings and amenities mentioned in this brochure without notice.
5. The dashed line indicates the possible location for installing the utility lines (not performed during construction).

2 BEDROOM | Naomi 4

2 BEDROOM | Naomi 4

2 BEDROOM(M)  
TYPE C

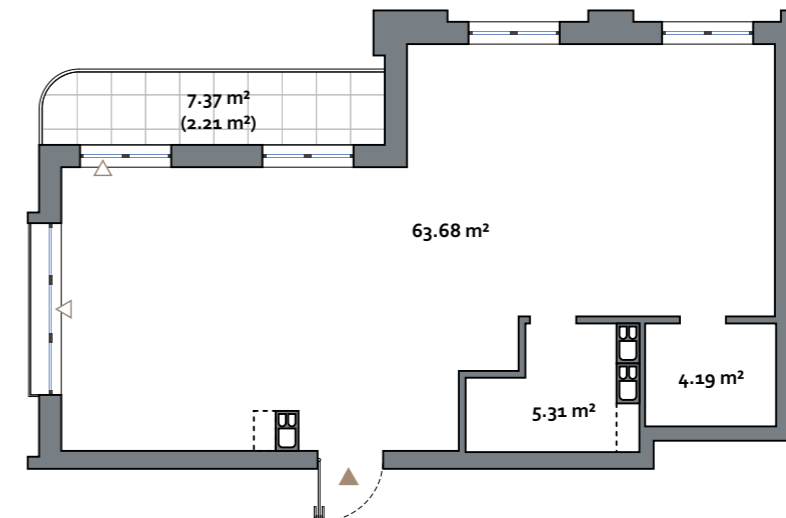
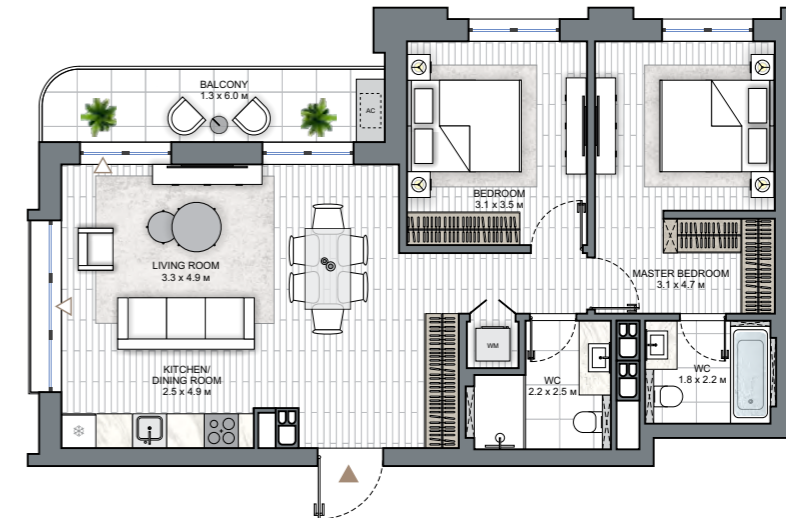
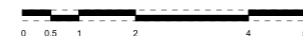
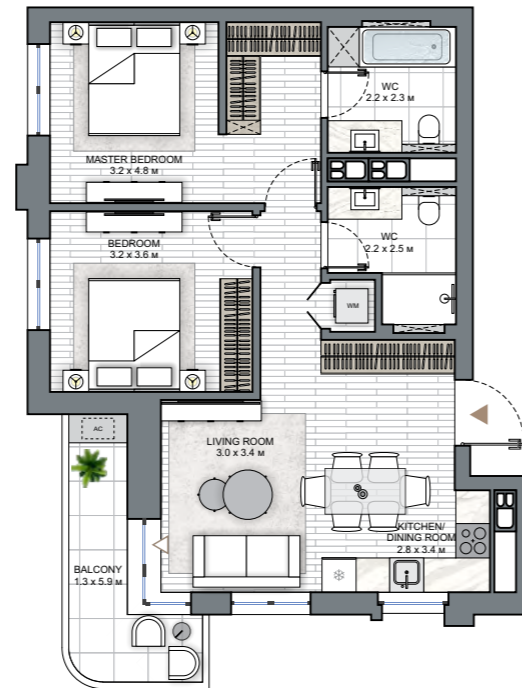
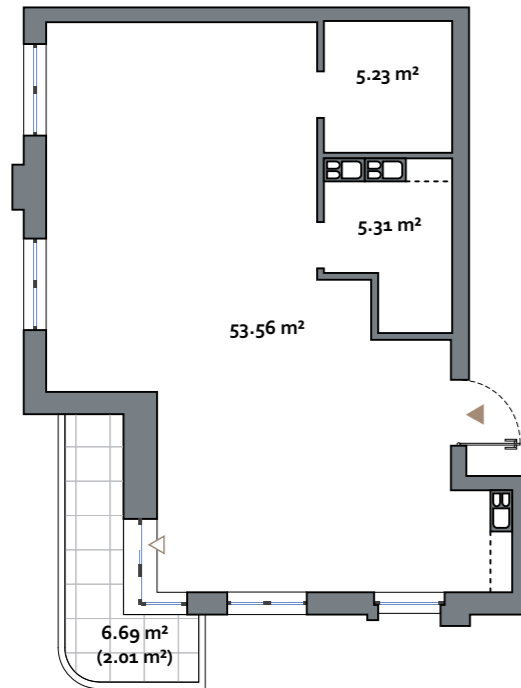
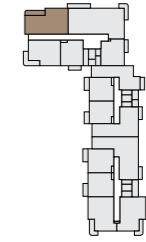
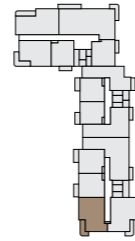
2 BEDROOM(L)

APARTMENT AREA.....64.10 - 64.94 m<sup>2</sup>  
BALCONY AREA .....6.43 (1.93 m<sup>2</sup>) - 6.69 (2.01 m<sup>2</sup>)  
NET AREA.....64.94 - 66.13 m<sup>2</sup>

APARTMENT AREA.....73.18 - 74.05 m<sup>2</sup>  
BALCONY AREA .....7.29 (2.19 m<sup>2</sup>) - 9.02 (2.71 m<sup>2</sup>)  
NET AREA.....75.37 - 76.76 m<sup>2</sup>

KEY PLAN 1-7 FLOORS

KEY PLAN 1-9 FLOORS



Disclaimer

1. All room dimensions are in metric and measured to structural elements and exclude wall finishes and construction tolerances.
2. All dimensions have been provided by our consultant architects.
3. All materials, dimensions, features and amenities are approximate at the time of printing.
4. Actual area may vary from stated area and unit direction may vary from unit to unit. The developer reserves the right to make revisions to the floor plans and any features, materials, dimensions, drawings and amenities mentioned in this brochure without notice.
5. The dashed line indicates the possible location for installing the utility lines (not performed during construction).

Disclaimer

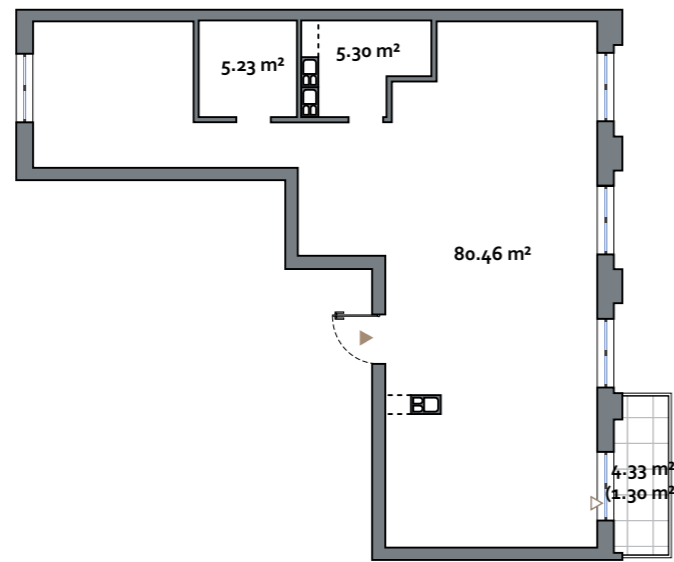
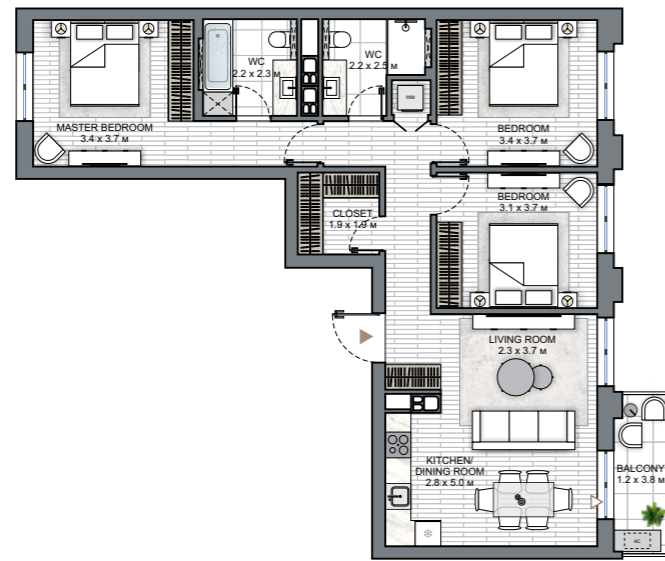
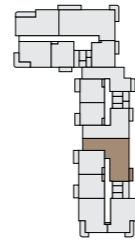
1. All room dimensions are in metric and measured to structural elements and exclude wall finishes and construction tolerances.
2. All dimensions have been provided by our consultant architects.
3. All materials, dimensions, features and amenities are approximate at the time of printing.
4. Actual area may vary from stated area and unit direction may vary from unit to unit. The developer reserves the right to make revisions to the floor plans and any features, materials, dimensions, drawings and amenities mentioned in this brochure without notice.
5. The dashed line indicates the possible location for installing the utility lines (not performed during construction).

3 BEDROOM | Naomi 4

3 BEDROOM TYPE A

APARTMENT AREA .....90.99 m<sup>2</sup>  
 BALCONY AREA .....4.33 (1.30 m<sup>2</sup>)  
 NET AREA .....92.29 m<sup>2</sup>

KEY PLAN 2-7 FLOORS



Disclaimer

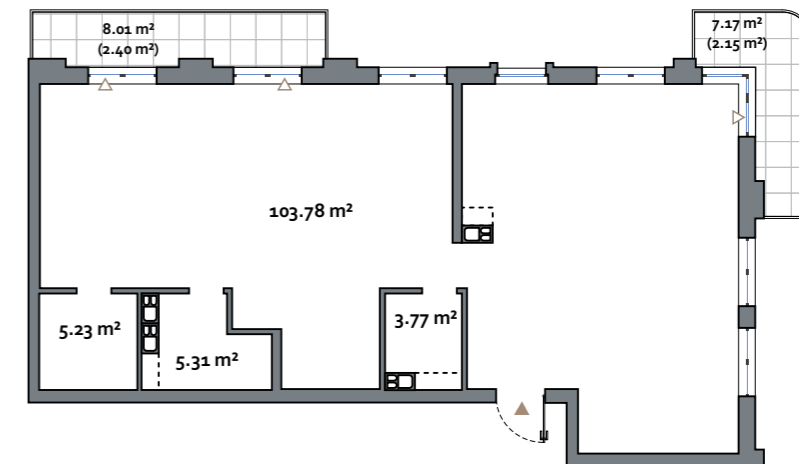
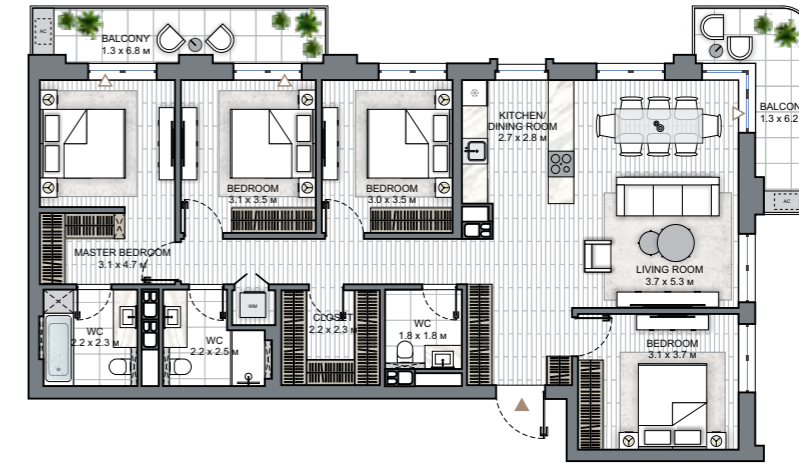
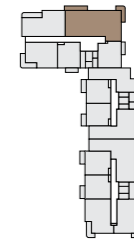
1. All room dimensions are in metric and measured to structural elements and exclude wall finishes and construction tolerances.
2. All dimensions have been provided by our consultant architects.
3. All materials, dimensions, features and amenities are approximate at the time of printing.
4. Actual area may vary from stated area and unit direction may vary from unit to unit. Drawings not to scale. The developer reserves the right to make revisions to the floor plans and any features, materials, dimensions, drawings and amenities mentioned in this brochure without notice.
5. The dashed line indicates the possible location for installing the utility lines (not performed during construction).

4 BEDROOM | Naomi 4

4 BEDROOM TYPE A

APARTMENT AREA .....118.09 - 118.49 m<sup>2</sup>  
 BALCONY AREA .....15.18 (4.55 m<sup>2</sup>) - 15.49 (4.65 m<sup>2</sup>)  
 NET AREA .....118.49 - 122.74 m<sup>2</sup>

KEY PLAN 1-9 FLOORS



Disclaimer

1. All room dimensions are in metric and measured to structural elements and exclude wall finishes and construction tolerances.
2. All dimensions have been provided by our consultant architects.
3. All materials, dimensions, features and amenities are approximate at the time of printing.
4. Actual area may vary from stated area and unit direction may vary from unit to unit. Drawings not to scale. The developer reserves the right to make revisions to the floor plans and any features, materials, dimensions, drawings and amenities mentioned in this brochure without notice.
5. The dashed line indicates the possible location for installing the utility lines (not performed during construction).

# Naomi 4

Any public images and visualizations published on the official website and in informational materials (including brochures, renders, prospectuses, booklets, layouts, 3D models, diagrams, and other graphic materials) do not constitute a public offer, advertising representation, or warranty of full compliance of the future construction project with the depicted materials, do not form part of the project documentation, nor constitute information contained therein. Such materials are of a conditional, reference, and illustrative nature only and are intended solely to convey a possible concept and the anticipated atmosphere of the future residential development. The project documentation shall have unconditional priority for all participants in the construction process.

The Developer reserves the right, at its sole discretion and without prior approval or consent of the client, to amend project solutions, including but not limited to the visual characteristics of the building, landscaping of adjacent territories, small architectural forms, as well as engineering and transport infrastructure and the street and road network, construction and finishing materials, and their actual physical implementation.

NORTHWATERFRONT.BY



International number: + 375 17 311-68-88  
Toll-free number: 8-801-100-3888

North Waterfront Sales Center,  
Sverdlova str. 11, Minsk  
Tsvirko str. 84, Minsk